

Helium Zone Management

Spec Sheet

The Helium Zone Management System is designed to efficiently **manage filling of helium cylinders**. The act of "cascade" filling involves the filling of cylinders in steps of pressure. Most commonly, tube trailers are used as the gas source. Starting from the "low" tube, pressure is "cascaded" into the receiving cylinders. Tubes are opened sequentially until a target pressure has been reached and closed.



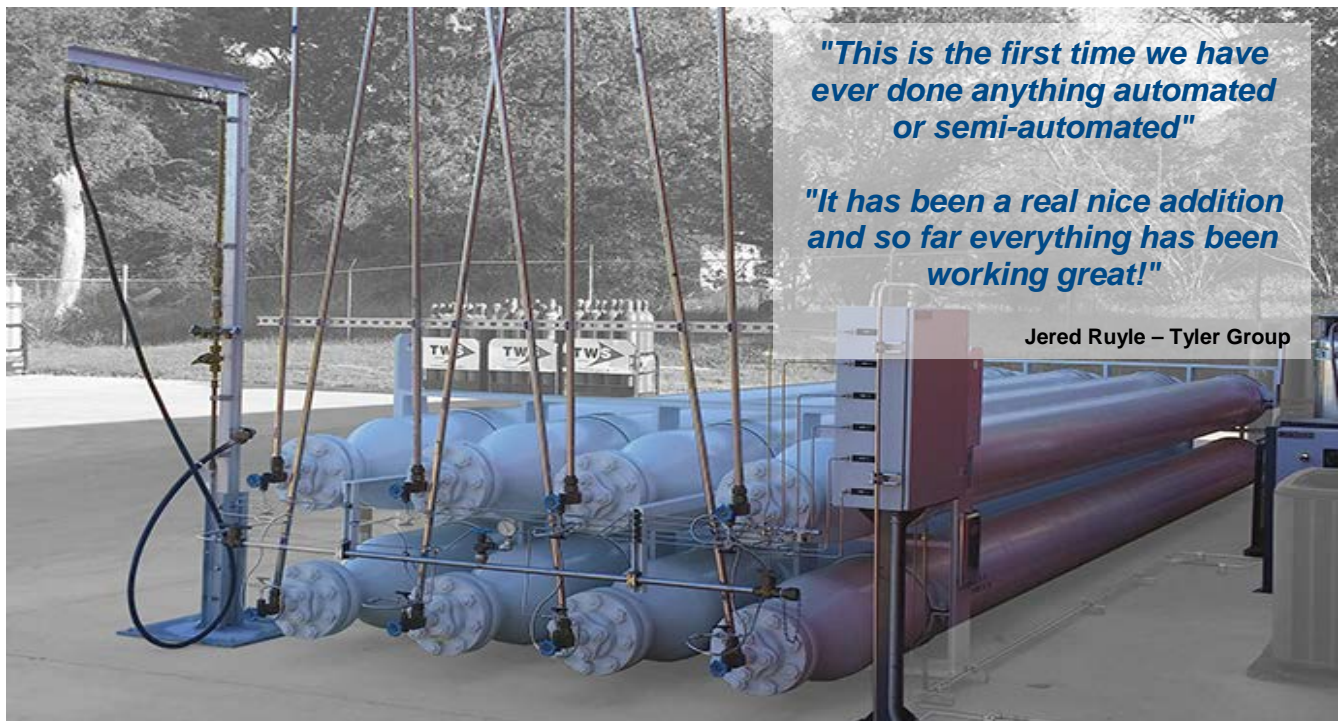
The Helium Zone Management System, used in conjunction with a filling panel, **gives an operator the ability to open and close appropriate zones [tubes] through an HMI digital touch panel display**. The pressure of each zone is closely monitored by a pressure transducer allowing for fast, accurate data at the control panel.

Features & Benefits:

- A Compact Design, all of the zone management solenoid valves are secured within a NEMA 4 enclosure, pedestal mounted for easy installation
- Each zone can consist of one or more tubes and can be calibrated independently
- Each zone is outfitted with a 3-way switching valve and customized header to easily switch between withdraw and fill
- Zone pressures are displayed digitally for fast, accurate pressure readings
- Password security for settings screen(s)

Options:

- Outdoor enclosure heater and thermostat to control and protect the electrical and mechanical components from exposure to low temperatures
- Automated compressor cycle will start and stop the compressor as needed



"This is the first time we have ever done anything automated or semi-automated"

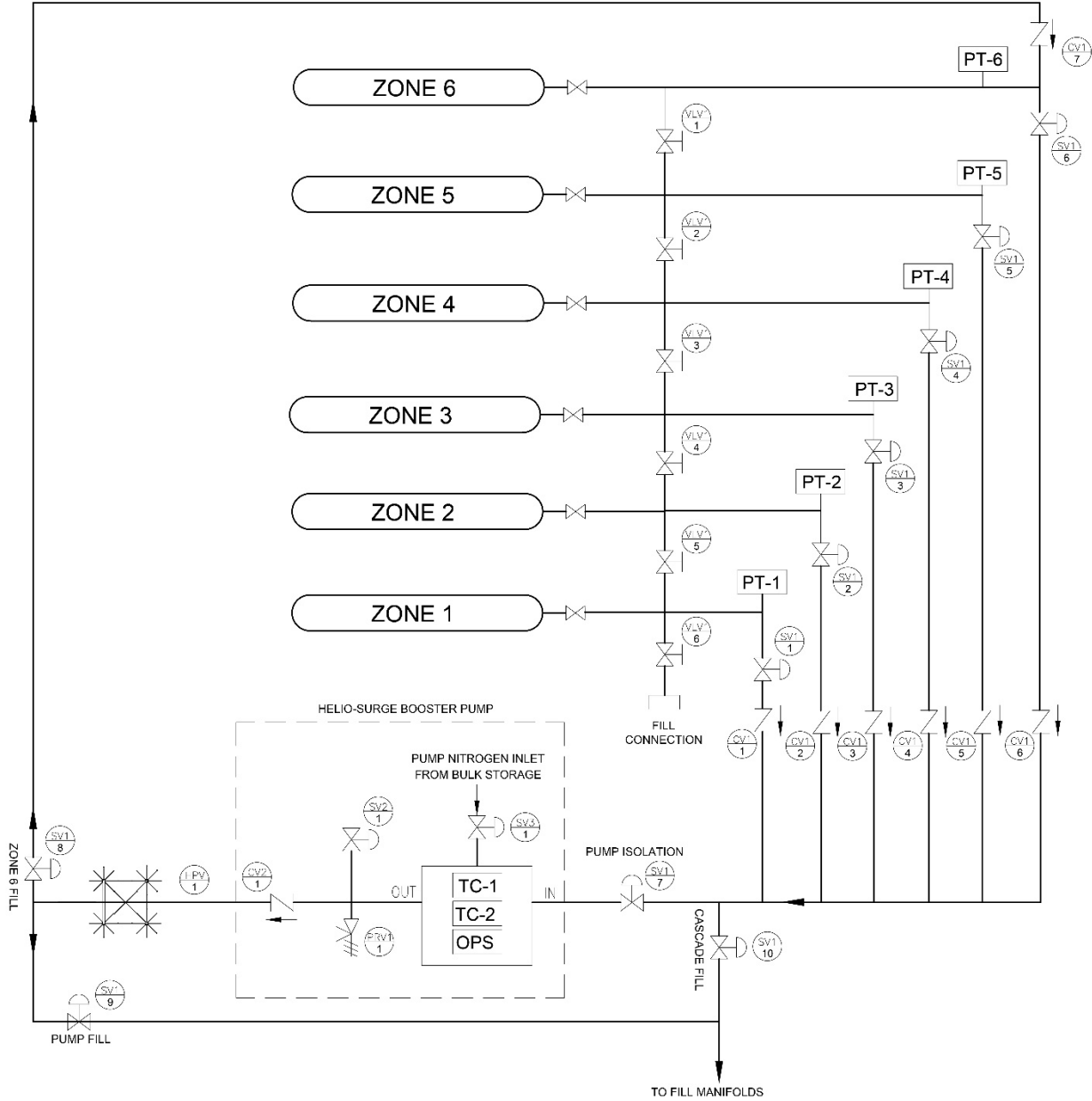
"It has been a real nice addition and so far everything has been working great!"

Jered Ruyle – Tyler Group

Helium Zone Management

Spec Sheet

Typical P&ID



Works best with Helio Surge



Coupled with the Helio Surge booster pump, use the lower pressure zones to fill the top zone during downtime; no more waiting on a delivery or the compressor to finish.

Ask for more info, today!