

# SequeFill, Automated CO<sub>2</sub>/N<sub>2</sub>O Fill System

Spec Sheet

**SequeFill Automatic Palletized CO<sub>2</sub>/N<sub>2</sub>O Cylinder Filling System**, to provide sequential, unattended filling of up to a 20 pallet-configuration of cylinders, bulk liquid cylinders or manifold "packs". System includes the following:

- Control Console with Mitsubishi PLC, Touchscreen interface, digital weight display, emergency stop button and keyed on/off switch
- 1 or 2 Retracto Manifolds with retractable fill hoses, individual air actuated ball valves, individual air actuated control valves, pressure transducer, brass manifold, safety relief valves and aluminum frame with custom decal side panels.
- 1 or 2 Platform Scales, 48" x 48", with ZM303 series digital indicators



 **SEQUEFILL™**

**35% +  
Time  
Reduction**

## System Requirements

- Working Pressure: 1200 PSI (82 bar)
- Flow Rate: Per Pump specification - adjustable 25 to 50 lbs.
- Cylinder Size Minimum: 20 lb. net
- Power requirement: 120-volt, single phase, 50/60 Hz
- Air: 90-110 PSI
- Network connection for remote monitoring, program changes

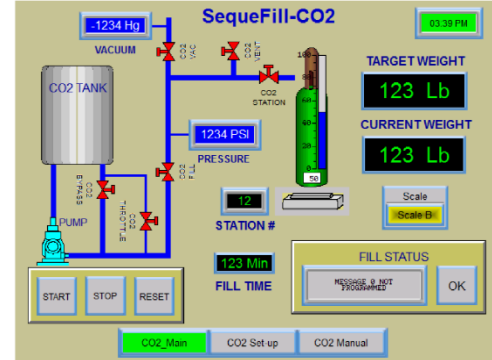


**SequeFill** (Continued)

**Spec Sheet**

The sequential filling of cylinders has proved to be an accurate and fast way of filling LCO2.

Representing over 20 million metric tons consumed annually, CO2 is a market that everyone is playing in. **SequeFill** can help your company better service the consumer while keeping your fill plant efficient and safe.



Time Study & Validation conducted by a 3rd party.

Loading Steps		Unloading Steps		Operator Time Total Set-Up	
Check Tare Weight		Disconnect		Loading Steps	0:13
Load Cylinder (s)		Check Final Weight		Unloading Time	0:06
Connect Cylinder (s)		Load Cylinder (s)			
Hammer Test				<b>Total Operator Time:</b>	<b>0:19</b>
Start	9:16	Start	10:29	<b>Total Fill (Machine) Time</b> <b>0:38</b>	
End	9:29	End	10:35		
	<b>0:13</b>		<b>0:06</b>		

Manual Process		SequeFill-18		<p><b>After completing 4 pallets, the operator can manage to connect an additional pallet and can have a head start for the next day.</b></p>
Start Time	8:48	Start Time	11:12	
End Time	10:26	End Time	1:42	
Total Time (Min)	108	Total Time (Min)	150	
Cylinders Filled	36	Cylinders Filled (18x4)	72	
Total Time Per Day	216.0	Total Time Per Day	150.0	
Time Per Cylinder	<b>3.0</b>	Time Per Cylinder	<b>2.1</b>	

**Operator time reduction by 35%**

**For even faster fill times add our W50 LCO2 Pump!**



**50 Lb. Per Minute**